

Marina

Marina entrance:
N 47°16.16'
W 91°16.45'
This is also marked by lit buoys.

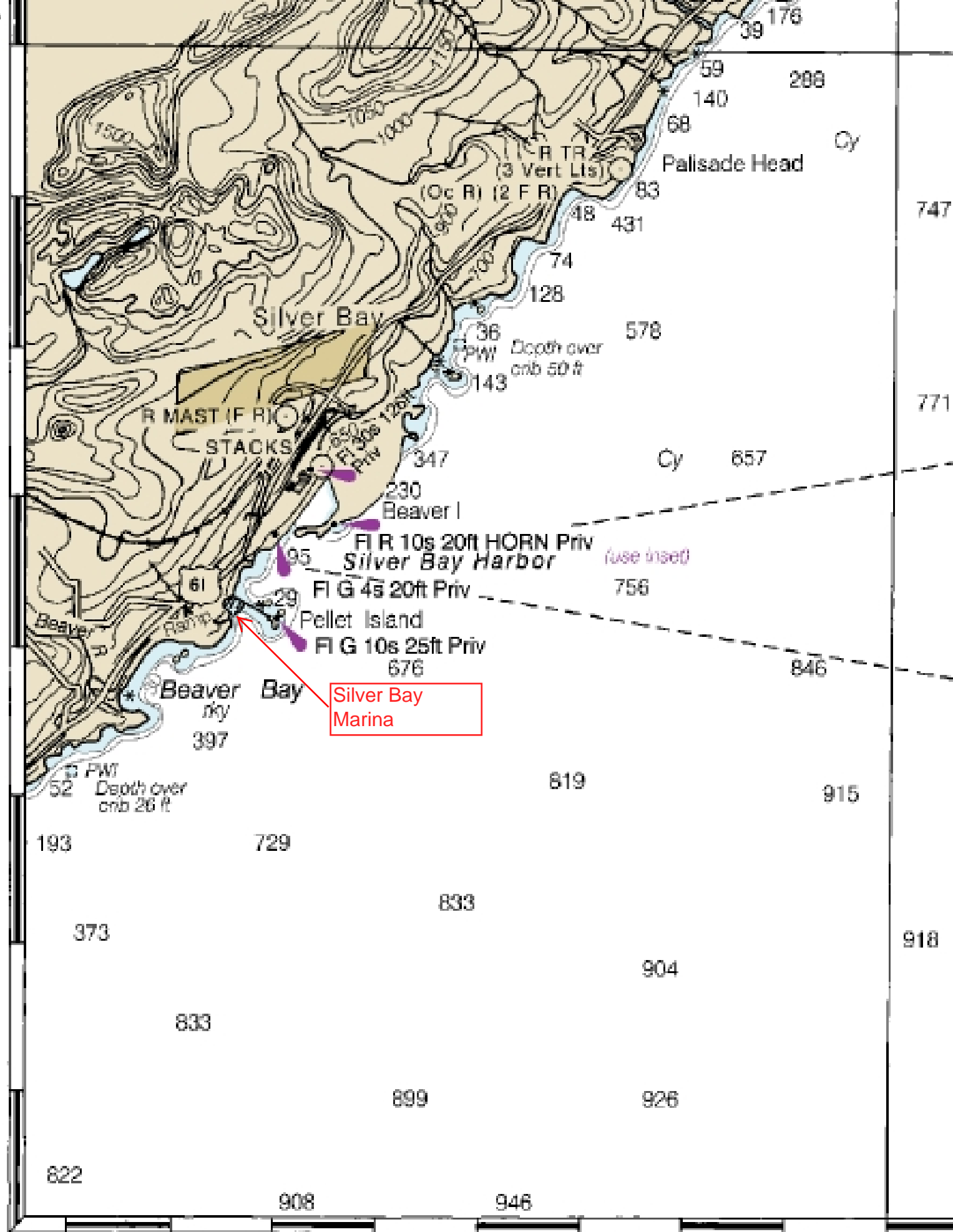
Midpoint of finish line:
N 47°16.04'
W 91°15.82'

Finish Line:
A compass line running SE (135° T) from the Pellet I. FI G light and extending 0.5 nm into the lake. Cross in an easterly direction.

Silver Bay Marina

phone: (218)226-3121 to reserve slip.
map from NOAA Chart 14967

47°
20'



Finish Line is a
compass line at 135°
from this light on the
north end of Pellet
Island:
FI G 10s 25 ft Priv

